A group of children in school uniforms are playing on a wooden playground structure with chains. One girl is climbing, while others are standing and holding the chains. The background shows trees and a fence.

21ST MARCH 2025

# NEWSLETTER

Penwortham Primary School

## Week 11

Spring has finally arrived! Our remembrance garden on the playground is blooming with lovely daffodils, and the field is now back open for children to explore and play during break and lunchtime.

On Monday, Year 1 enjoyed a trip to "Bring Yer Wellies," where they learned about the importance of plants in our lives and what they need to grow. Each child had the opportunity to plant two herb plants to take home and for the classroom. In the afternoon, the class split into two groups for den building and games in the woodland, followed by watching a boat race on the brook. The children represented the school beautifully, and everyone had a fantastic day out. A big thank you to Miss Lilley for organising this amazing day and to all the volunteers who helped.

On Wednesday, Year 6 continued their Bikeability sessions provided by South Ribble. The children practiced on the playground until lunch, focusing on bike control and signaling while looking around. After lunch, they cycled in small groups on the road, gaining valuable experience cycling with traffic. The entire class did an amazing job and built their confidence throughout the sessions.

Also on Wednesday, it was the Preschool's turn for the reading café. We warmly welcomed families into our wonderful library, where children shared their favourite stories and showed where they love to read.

Today is World Poetry Day! This special day encourages children to explore poetry and get creative by writing their own verses, learning about the various ways poetry can be written and performed.

## VALUE OF THE HALF TERM DISCOVER

Recommended  
Reading Book:





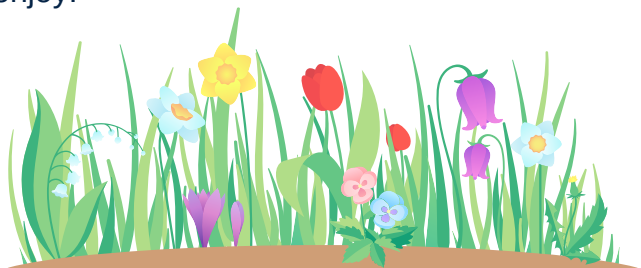


## EYFS Garden Update

As we continue to improve the EYFS garden please note the following arrangements:

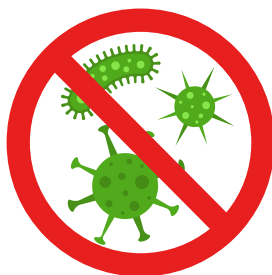
- Reception & Pre-School: Drop off and pick up at the blue gate on the reception playground.
- Year 6: Drop off and pick up from the playground outside the Y2 door.

We are receiving regular updates from Priory Phase 1 of the work will be finished just in time for our return after Easter, and our EYFS children will have a wonderful new area to enjoy!



## Sickness in School

This is a reminder of the school illness guidelines. The school has procedures in place for sending and keeping children home from school when they are ill. We follow these procedures to make sure that children are given an adequate amount of time and rest to get well before returning to school. This also prevents the spread of illness to others. Good attendance is important for success, but we also want to protect the health of other students, families and staff.



## Dates for your Diary:

26.03.25 - Y6 Bikeability  
26.03.25 - Y3 Additional Parents Evening  
26.03.25 - Y2 Class Assembly Showcase  
27.03.25 - Y6 Class Assembly Showcase  
02.04.25 - Y1 Class Assembly Showcase  
04.04.25 - SCHOOL CLOSURE 2PM  
07.04.25 - 21.05.25 - HALF TERM  
25.04.25 - Y3 Roman Museum Visit  
29.04.25 & 30.04.25 - Parents Evening  
05.05.25 - MAY DAY CLOSURE  
07.05.25 - Y4 Class Assembly  
14.05.25 - Y3 Class Assembly Showcase  
21.05.25 - Y5 Class Assembly Showcase  
23.05.25 - INSET DAY  
26.05.25 - 30.05.25 - HALF TERM  
02.06.25 - INSET DAY  
20.06.25 - Y3&Y4 Rock & River  
30.06.25-01.07.25 - Y5 Hothersall Lodge  
16.07.25 - Y6 Performance  
18.07.25 - Y6 Leavers Assembly



# Photos of the week





# Photos of the week







## Champions of the Week...

### Pre School

**Heidi** for being an excellent member of our preschool stars and always being kind and helpful

**Zayan** for his enthusiasm and attitude to his learning in maths..

### Reception

**Hewie** for caring for minibeasts during our Muddy Monday session.

**Oliver** for showing great determination with his reading this week.

### Year 1

**Whole class** for their enthusiasm and attitude on our trip to Bring Yer Wellies

**Cooper K** for extending his learning at home and creating a fantastic tree of life..

### Year 2

**Ava** for being a fantastic partner for others in different lessons and for her patience with others.

**Harrison** for being creative in his writing this week. Challenging himself to find interesting descriptions to use and for others to enjoy reading.

### Year 3

**Violet** for showing great perseverance with her Maths work

**Arthur** for his wonderful sense of humour and great personality that makes everyone in class smile

### Year 4

**Karina** for her growing confidence in her writing

**Pippa** for terrific science explanation of the water cycle

### Year 5

**Anna** for her warm-heartedness and empathy for our planet.

**Harry** for being an all-round fantastic pupil and trying his best in everything he does.

### Year 6

**Toby** for his showing commitment to focusing his learning

**Chloe** for her fantastic efforts in Bikeability

## House Cup weekly Winners



## Attendance:

Reception - 94.3%

Year 1 - 92.3%

Year 2 - 91.7%

Year 3 - 89%

Year 4 - 94.5%

Year 5 - 94.5%

Year 6 - 93.3%

AMAZING



# PTFA EVENTS 2025

## JANUARY

31.01.25 - Sweet  
Friday

## FEBRUARY

12.02.25 -  
Valentines Disco

28.02.25 - Sweet  
Friday

## MARCH

26.03.25 -  
Wonderwoman Day

28.03.25 - Sweet  
Friday

## APRIL

04.04.25 - Make  
the rules day

25.04.25 - Sweet  
treat Friday

## MAY

Penwortham Live

20.05.25 super kid  
day

30.05.25 - Sweet  
treat Friday

## JUNE

11.06.25 - BBC  
Gladiator Visit - Steel

12.06.25 - Superman  
Day

Penwortham Gala

27.06.25 -  
Sweet treat Friday

## JULY

12.07.25 - Music  
Festival

18.07.25 - Sweet  
treat Friday

## AUGUST

## SEPTEMBER

08.09.25-12.09.25  
- Wonka Week

26.09.25 - Sweet  
treat Friday

## OCTOBER

24.10.25 -  
Autumnal Day /  
Fancy Dress

31.10.25 - Sweet  
treat Friday

## NOVEMBER

28.11.25 - Sweet  
treat Friday

## DECEMBER

13.12.25 -  
Christmas Family  
Night  
(disco/bongo bingo)

Penwortham  
Christmas Markets





Penwortham  
**allstars**

**LIMITED TIME  
OFFER**

**50%  
OFF**

**BREAKFAST  
CLUB**

~~£5.50~~

**£2.75**

**AFTERSCHOOL  
CLUB**

~~£7~~

**£3.50**

**Until  
May  
2025**





**Fun filled sessions for toddlers and pre-school children all about play, music and movement**

---

## **TIMETABLE**

### **MONDAY**

**St Paul's Church Hall  
Farington Moss**

**9.30-10.30am - Tiny Groovers**

**10.45-11.45am - Little Groovers**

### **FRIDAY**

**St Leonard's Church Hall  
Penwortham**

**9.30-10.30am - Tiny Groovers**

**10.45-11.45am - Little Groovers**

---

### **ABOUT OUR SESSIONS**

#### **Part 1 - Free play**

**Children can follow their interests in our active play areas (soft play, bouncy castle and more!), imaginative play and creation stations... something for everyone!**

#### **Part 2 - Fun with Marie**

**Led session with games, music and dancing**

### **GET IN TOUCH**

**EMAIL - [info@giggleandgroove.co.uk](mailto:info@giggleandgroove.co.uk)**

**CALL/WHATSAPP - 07787 686721**

---

**COME AND JOIN US!**

**To find out more and book, head to our website**

**[www.giggleandgroove.co.uk](http://www.giggleandgroove.co.uk)**