

A photograph of three children sitting on a large, patterned rug in a classroom. A boy in a maroon sweater is in the center, smiling. To his right, a girl in a blue school uniform is laughing. To his left, another child is partially visible. The background shows other children and green chairs.

28TH FEBRUARY 2025

NEWSLETTER

Penwortham Primary School

Week 8

We hope you all had a lovely break. As we settle back into the school routine, we want to take a moment to express our gratitude for your continued support and partnership. Your involvement makes a significant difference in our school community.

We are thrilled to welcome Mrs Barlow as the new Reception class teacher and Mrs Hastewell as the new Preschool lead to our amazing Penwortham family. Their enthusiasm and dedication will surely be an asset to our school.

EYFS Garden Construction: As you are aware, the EYFS garden is still under construction. We thank you for your patience and cooperation during this time as we have temporarily closed off the Meadway entrance. To access preschool, please enter through the blue gate at the reception playground and walk around, where Mrs Hastewell will warmly greet you.

All Stars Clubs: As this continues to grow our All Stars before and after-school clubs are now held in the hall. When dropping off or collecting your child please press the doorbell labeled "All Stars" at the main entrance which will notify the staff in the hall.

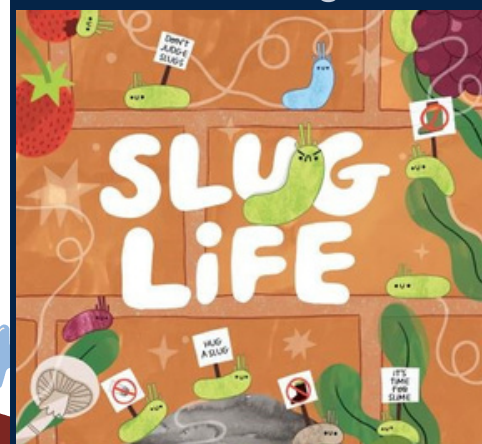
New Door Entry System: We are excited to inform you that we have recently installed a new door entry system at school. To enter the school via the office, please press the silver button on the new intercom.

Thank you for your ongoing support in ensuring a smooth transition during these changes.

VALUE OF THE HALF TERM CARE

Recommended
Reading Book:

Slug Life
by: Moesha
Kellaway





School Trips & Events

We are excited to announce that we have planned several school trips for this school year. Our goal is to provide you with as much notice as possible regarding payments and important information related to these trips. To help make the costs more manageable, we will offer payment plans over several months whenever possible.

Please keep in mind that if we do not raise enough funds, we may have to cancel a trip. It's important to note that our school does not make a profit from any of these trips; all funds collected go directly to vendors and related expenses.

If you have any questions or would like to discuss payment options in confidence, please don't hesitate to reach out to the school office. As we all know, costs are rising in many areas, and we appreciate your understanding during this time.

Along with the payment information, a spider survey will be sent to all parents. Please make sure to complete this survey, as it grants permission for your child to attend or participate in the trips. Failure to complete the survey may result in your child being unable to attend.

Thank you for your support and understanding.



Dates for your Diary:

05.03.25 - Tots on Tyres / Y3 Scootsafe
06.03.25 - World Book Day
12.03.25 - Y6 Bike Fix
12.03.25 - Y2 Martin Mere Trip
17.03.25 - Y1 Bring Yer Wellies
19.03.25 - Y6 Bikeability
26.03.25 - Y6 Bikeability
26.03.25 - Y2 Class Assembly Showcase
27.03.25 - Y6 Class Assembly Showcase
02.04.25 - Y1 Class Assembly Showcase
04.04.25 - SCHOOL CLOSURE 2PM
07.04.25 - 21.05.25 - HALF TERM
29.04.25 & 30.04.25 - Parents Evening
05.05.25 - MAY DAY CLOSURE
14.05.25 - Y3 Class Assembly Showcase
21.05.25 - Y5 Class Assembly Showcase
23.05.25 - INSET DAY
26.05.25 - 30.05.25 - HALF TERM
02.06.25 - INSET DAY
30.06.25-01.07.25 - Y5 Hothersall Lodge
16.07.25 - Y6 Performance
18.07.25 - Y6 Leavers Assembly

Attendance Matters

School attendance is a collaborative effort that involves both schools and parents. Research has consistently shown that regular attendance significantly impacts several key areas: Academic Achievement, Engagement, Social and Emotional Aspects, Reducing Gaps for Disadvantaged Students and Promoting a Positive School Environment. It's important to recognise that a child who arrives late to class often misses the essential objectives of the day. This can place them at a disadvantage as they must catch up on missed content. Additionally, their late arrival can disrupt the flow of the lesson and hinder the learning experience for other pupils.



Exciting News for Preschool Families!

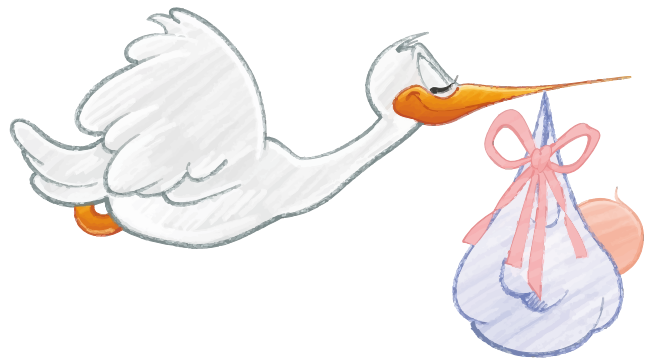
We still have preschool spots available for your little ones! All 3 and 4-year-olds are entitled to up to 15 hours per week of engaging preschool activities. For our working families, this can increase to an amazing 30 hours! **Don't miss out!** Contact the school office to get your application pack or to schedule a tour of our delightful school.

Preschool Hours:

Join us from 7:30 AM to 6:00 PM, Monday to Friday, during term time only

Congratulations

We are thrilled to announce that Mrs. Chatterton is expecting a baby! Our warmest wishes go out to her and her family as they prepare to welcome their new arrival in August.



Thank you!

We are grateful to our generous neighbor, Gail Middleshaw, for donating a piano to our school. With the assistance of Mr. Patterson and Mr. Gill, the piano was successfully transported to our school. Thank you, Gail, for your kindness and support. Your contribution will enrich our students' musical education.

Photos of the week





Champions of the Week...

Reception

Sammy for trying extremely hard with her reading.

Melody for being a very kind and considerate friend to other children in class.

Year 1

Mia for editing and improving her work to make it the best it can be.

Cooper K for extending his learning in challenge areas.

Year 2

Aaliyah-Mae for amazing phonics work this week

Austin for good descriptive works when talking about fireworks

Year 3

Ranveer for asking lots of questions in class this week to improve his learning

Trixie for being an inspiration for us all with her sporting achievements

Year 4

Joseph for fabulous exploration of structures using various materials in DT.

Betsy for Thinking outside the box and with challenging structures.

Year 5

Henry for being a very kind friend.

Franc for her great determination and interest in the environment during our fieldwork.

Year 6

Eliot for always clarifying he has understood learning correctly

Matvii for determination in SATs tuition to improve in English

House Cup weekly Winners



Attendance:

Reception - 94.3%

Year 1 - 92.3%

Year 2 - 89.3%

Year 3 - 97%

Year 4 - 95.2%

Year 5 - 97.1%

Year 6 - 93.7%

Congratulations to
Year 3 & Year 5 for
meeting the school
target of 96%



AMAZING

PTFA EVENTS 2025

JANUARY

31.01.25 - Sweet
Friday

FEBRUARY

12.02.25 -
Valentines Disco

28.02.25 - Sweet
Friday

MARCH

26.03.25 -
Wonderwoman Day

28.03.25 - Make
the rules day £1 &
Sweet Friday

APRIL

03.04.25 - Easter
Fun Run- super kid
day

25.04.25 - Sweet
treat Friday

MAY

Penwortham Live

30.05.25 - Sweet
treat Friday

JUNE

11.06.25 - BBC
Gladiator Visit - Steel

12.06.25 - Superman
Day

Penwortham Gala

27.06.25 -
Sweet treat Friday

JULY

12.07.25 - Music
Festival

18.07.25 - Sweet
treat Friday

AUGUST

SEPTEMBER

08.09.25-12.09.25
- Wonka Week

26.09.25 - Sweet
treat Friday

OCTOBER

24.10.25 -
Autumnal Day /
Fancy Dress

31.10.25 - Sweet
treat Friday

NOVEMBER

28.11.25 - Sweet
treat Friday

DECEMBER

13.12.25 -
Christmas Family
Night
(disco/bongo bingo)

Penwortham
Christmas Markets



Penwortham
allstars

**LIMITED TIME
OFFER**

**50%
OFF**

**BREAKFAST
CLUB**

~~£5.50~~

£2.75

**AFTERSCHOOL
CLUB**

~~£7~~

£3.50

**Until
May
2025**