

DATES FOR THE DIARY...

- SATs week: Monday, 14th May 2018 – Thursday, 17th May 2018
- PGL: Monday, 18th June – Friday, 22nd June 2018



SATS

[HTTPS://WWW.YOUTUBE.COM/WATCH?V=532MUVA81TM](https://www.youtube.com/watch?v=532MUVA81TM)

SATS TIMETABLE

Day	Test	Time
Monday, 14 th May	GPaS Paper 1	09:30
	GPaS Paper 2 (Spelling)	11.00
Tuesday, 15 th May	Reading Paper	09:30
Wednesday, 16 th May	Mathematics: Paper 1	09:30
	Mathematics: Paper 2	10.40
Thursday, 17 th May	Mathematics: Paper 3	09:30

HOW CAN I HELP?

We wish for every child to have the best possible chance of success and to gain a sense of achievement.

- Support your child with any home learning they receive/have received.
- Encourage your child to be independent in finding their errors.
- Keep reading!
- Early bedtimes during the week – children actually enjoy the week but it is emotionally tiring for them.

USEFUL WEBSITES

<https://garyhall.org.uk/Ultimate-KS2-Maths-SATs-Organiser-Y5-6-1.pdf>

<https://www.spellingshed.com/>

<http://www.keystage2literacy.co.uk/spag-coverage-grid.html>



PGL

MONDAY, 18TH JUNE 2018 – FRIDAY, 22ND JUNE

ARRIVE AT SCHOOL ON MONDAY AT 9.00AM IN THE SCHOOL HALL WITH ALL BAGS. COACH WILL LEAVE APPROX 9.30

WE WILL RETURN ON FRIDAY AT AROUND 3.30PM TO 5.00PM, TRAFFIC DEPENDENT

STAFF

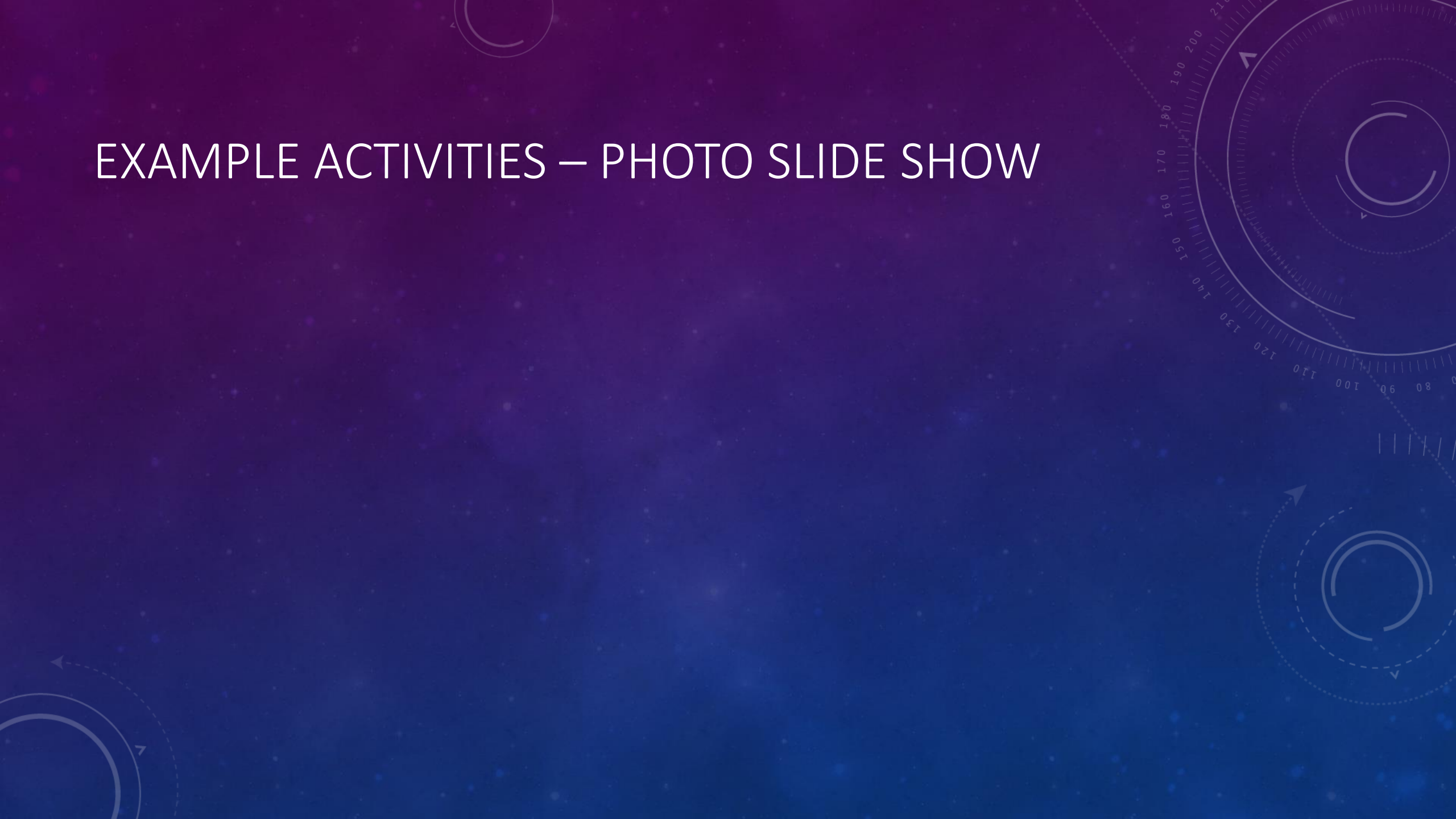
The following adults will be accompanying the children on the trip:

- Miss Andrew
- Mr Mitchell
- Mrs Taylor
- Mrs Cameron
- Mr Crawford (Parent)

ORDER OF EACH DAY

- Breakfast
- Activity 1 & 2
- Lunch
- Activity 3 & 4
- Change/chill
- Tea
- Evening Activity 5
- Wind-down, reflection
- Sleep...

EXAMPLE ACTIVITIES – PHOTO SLIDE SHOW



ROOM ALLOCATIONS

- Each child will write down up to three people they wish to share with.
- Each child will be allocated at least one of their choices, and more if this is possible.
- We are all within one lodge-block – boys one side, girls the other.
- Room allocations are shared with the children on arrival at PGL.

WHAT YOUR CHILD WILL NEED: LIST

- Spending Money (5x£1 in a bag to Mrs Cullen, week prior to PGL), up to £7 to carry with them on Monday)
- Appropriate medication (if applicable) - forms to follow this week, please return asap to Mrs Cullen.
- Packed lunch and drinks for Blue Planet day – in a carrier bag within a rucksack.
- Sweets/treats in suitcases.

MOBILE PHONES / ELECTRONIC TECHNOLOGY

- We will not be allowing the children to bring mobile phones.
- The school texting service will give you daily updates throughout the week.

PERSONAL CARE/NEEDS

- If your child has any issues regarding bedtime/mornings, please let us know.
- Medication if necessary will be administered by Miss Andrew and Mr Mitchell.
- Calpol, Ibuprofen, Piriton.
- For children who are unable to maintain an acceptable level of behaviour and cause any risk to others will be made to leave PGL. Parents will need to travel and collect their child in this instance.

EMERGENCIES

- In the event of an emergency, parents/guardians will be contacted by a member of staff.
- Please ensure our details for your phones are up to date.